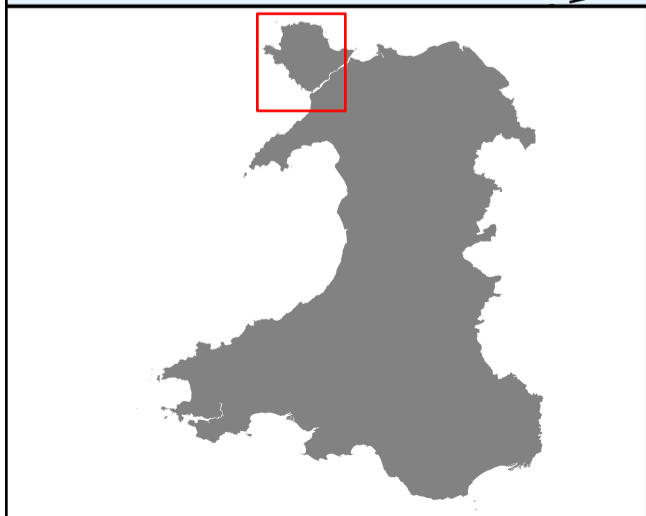
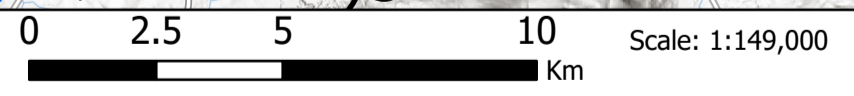


Airbus, USGS, NGA, NASA, CGIAR, NCEAS, NLS, OS, NMA, Geodatastyrelsen, GSA, GSI and the GIS User Community, Esri UK, Esri, HERE, Garmin, Foursquare, METI/NASA-USGS, Pontllyfni, Talysarn, Rhyd Ddu



- Areas of Outstanding Natural Beauty & National Parks
 - Distance buffers from key viewpoint (km)
 - Key Viewpoint
- HOBV – Height Object Becomes Visible**
- < 25 m
 - 26 - 49 m
 - 50 - 79 m
 - 80 - 108 m
 - 109 - 145 m
 - 146 - 175 m
 - 176 - 225 m
 - 226 - 350 m
 - > 351 m
- ZTV – Zone of Theoretical Visibility (within 35km)



The key view point is set at 1.5m above ground level. A bare earth zone of theoretical visibility (ZTV) is shown out to 35km in any direction. For areas not visible within 35km, colours show the height of an object before it would become visible (HOBV). Height classes and the buffer distances come from NRW's guidance GN 046 Using LANDMAP in Landscape and Visual Impact Assessment. The visibility data is for strategic and ready-reckoner use only, and is no substitute for site observations and more detailed mapping and assessment related to specific projects.

© Crown Copyright and database right 2022. Ordnance Survey licence number 100019741.
© Hawlfraint a hawliau cronfa ddata'r Goron 2022. Rhif Trwydded yr Arolwg Ordnans 100019741.